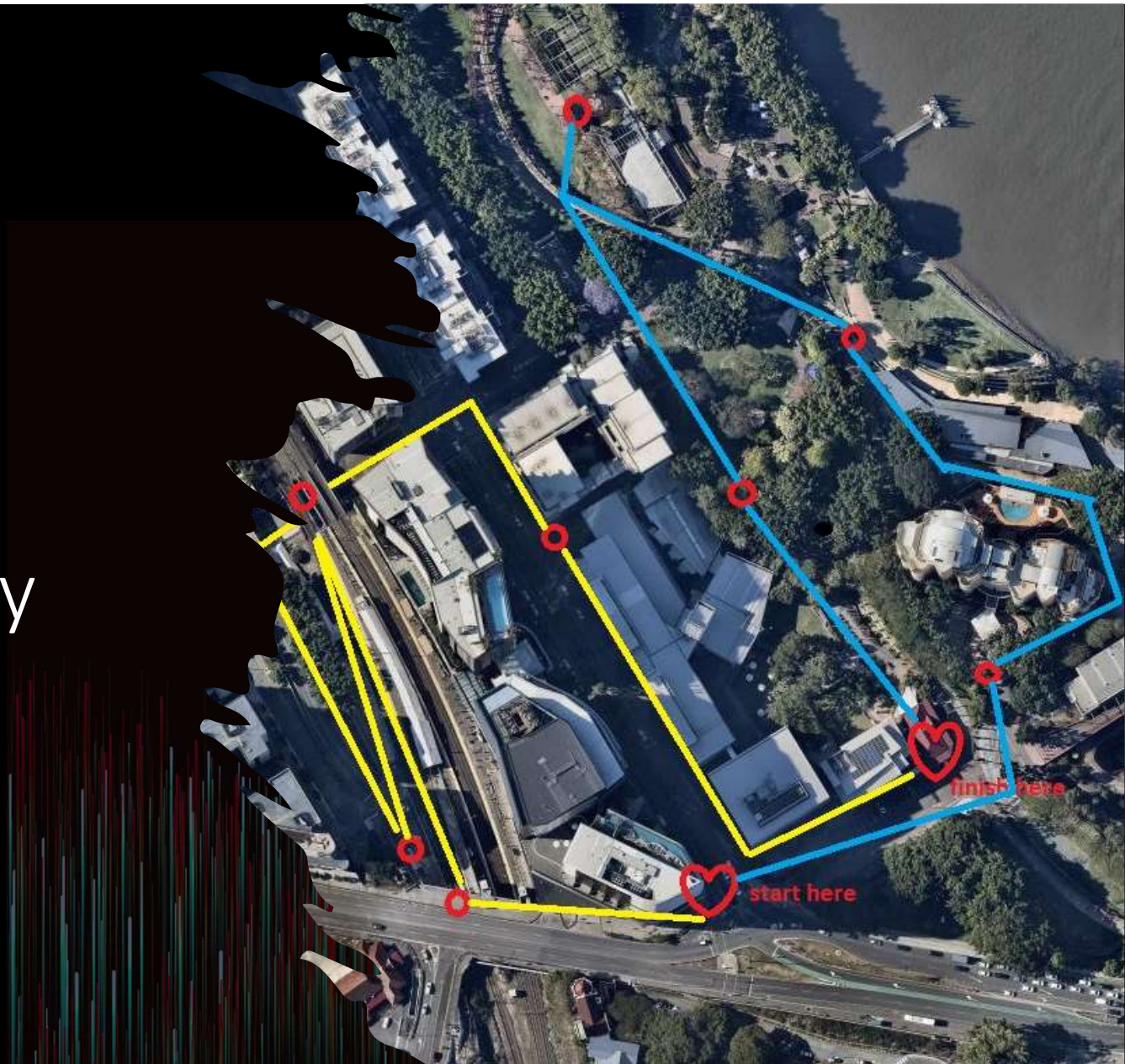


# Women's Night time Walking Safety Audit

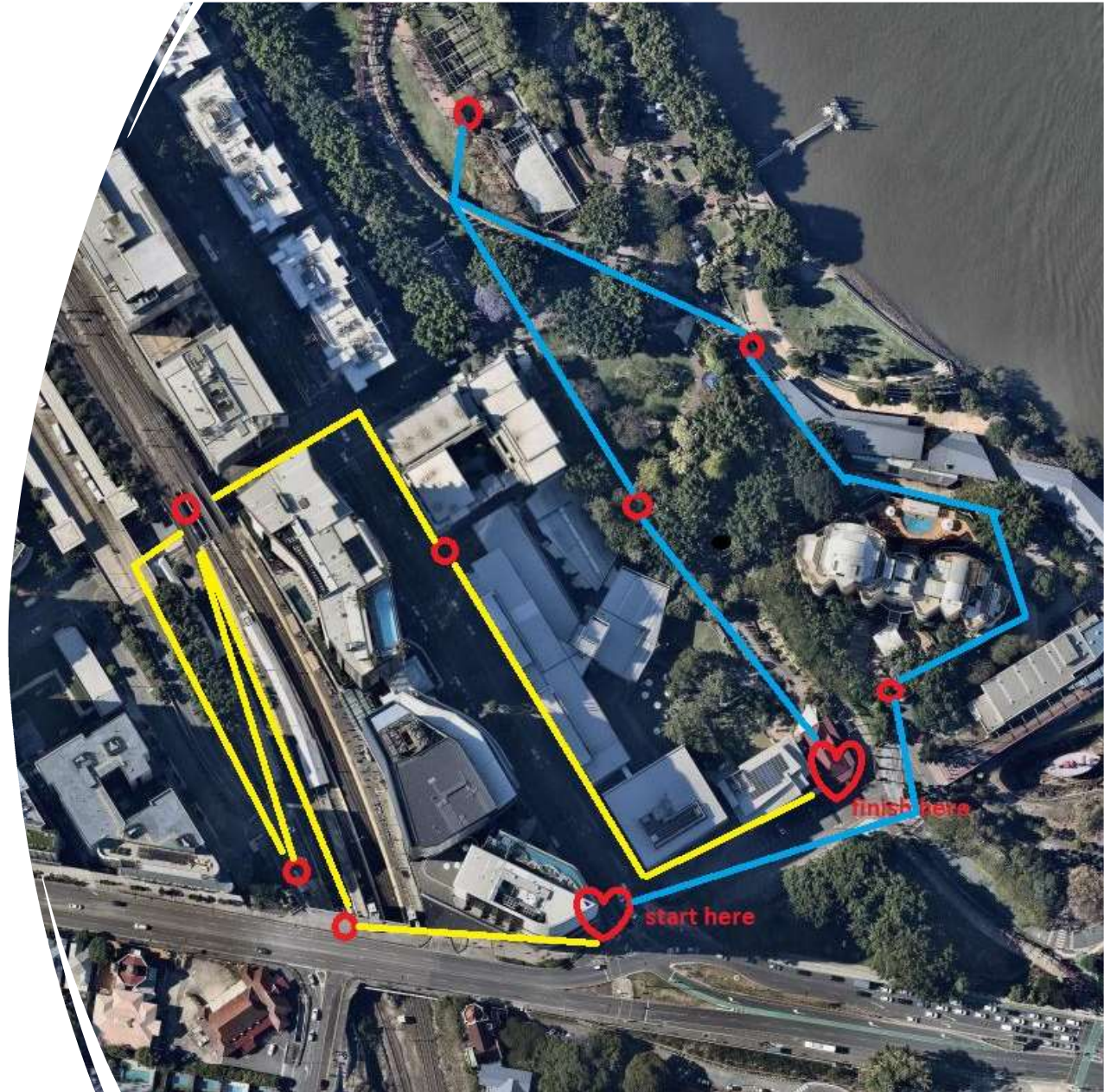
Southbank + Surrounds

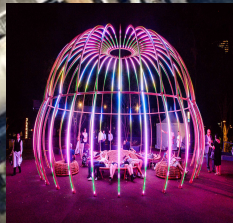
10 August 2023

Zonta (Brisbane Club), Queensland Walks,  
University of Queensland



- 
- 1 hour nighttime walk + 8 sites investigated
  - 33 walkers filled out the survey (36 attended)
  - 28 walkers identified as women and 5 as men
  - Ages ranged from 18 to 74 years of age
  - Most rarely or never have difficulty walking
  - Many (36%) rarely walk outside at night
  - 40% feel safe and 30% feel unsafe using public transport alone at night
  - 45% felt that Brisbane is not safe, healthy and active for women and girls at night
  - More lighting and lots of other people would make walking at night safer
  - Respondents felt safest at Southbank when visiting QPAC (forecourt), and the restaurants, and they felt least safe outside the Southbank bus station, on Tribune Street and at the Vulture Street pedestrian underpass





**8 Flowstate**

A Southbank Lighting Installation in the gardens

7% felt unsafe + 0% very unsafe

More people would make it feel safer

**7 Back of Griffith University**

A 'short cut' walking path to Little Grey Street restaurants

29% felt unsafe + 0% very unsafe

Less vegetation, more people, security cameras and lighting, would make it feel safer



**6 Aquitaine wait area**

A waiting area between restaurants in Southbank

0% felt unsafe + 0% very unsafe

Slowing the cyclists and scooters would make it feel even safer

**5 Entrance to Goodwill Bridge**

A dark pathway beside the bridge entrance, leads to back of restaurants

53% felt unsafe + 7% very unsafe

Lighting, slowing the e-scooters and cyclists and more people would make it feel safer



**1. Tribune Street**

Main walkway from/to Southbank bus and train stations and student accommodation

60% felt unsafe + 0% very unsafe

Lighting, more people, slower cyclists and e-scooters would make it feel safer



**2 Vulture St Underpass**

A pedestrian underpass connecting to student accommodation and girls school

36% felt unsafe + 43% very unsafe

More people, lighting, less noise, security cameras and less vegetation would make it feel safer



**3 Vulture St ramp**

A ramp from Vulture Street to student accommodation on Colchester Street

25% felt unsafe + 25% felt very unsafe

More lighting, security cameras, more people, less noise would make it safer

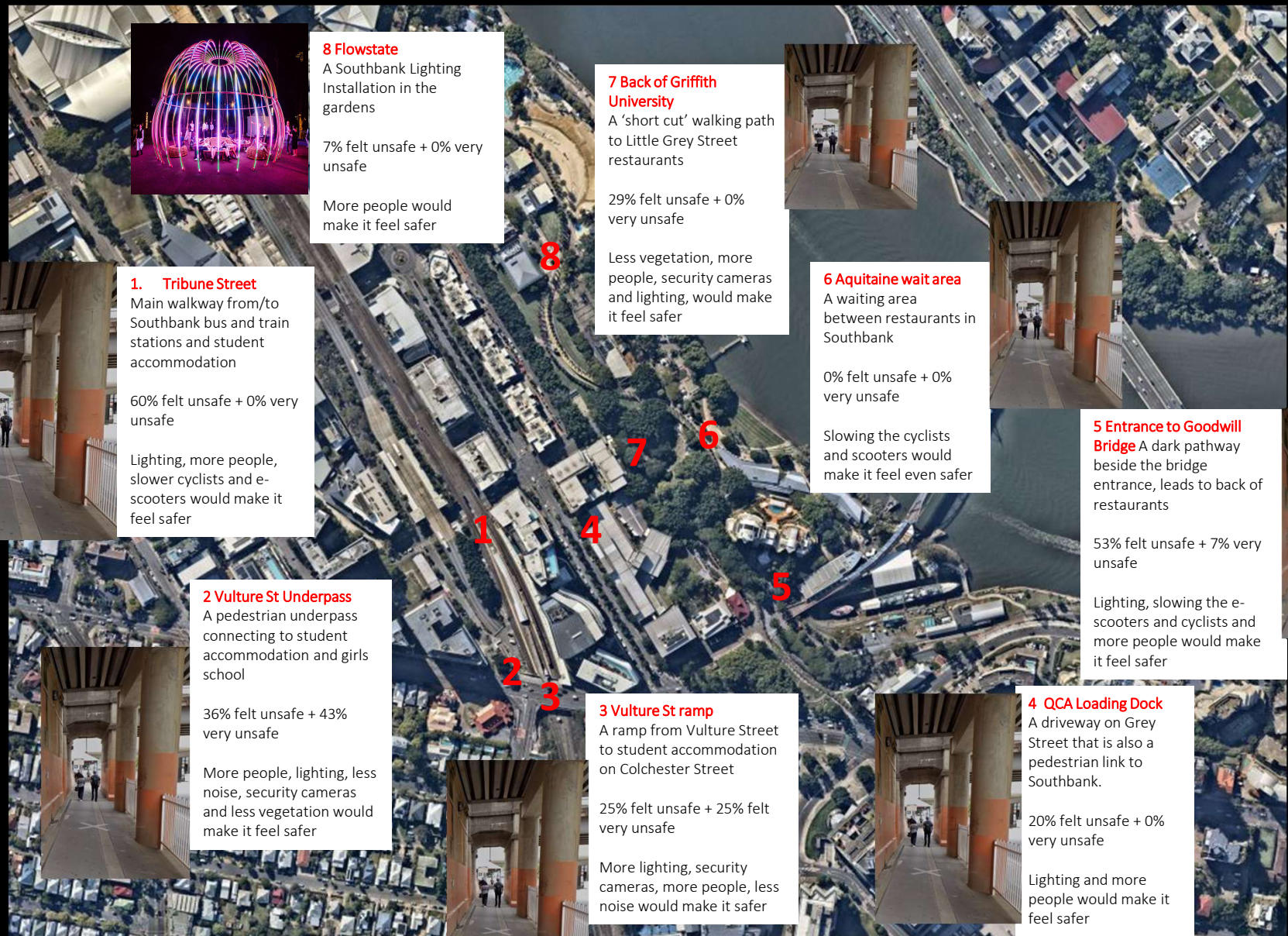


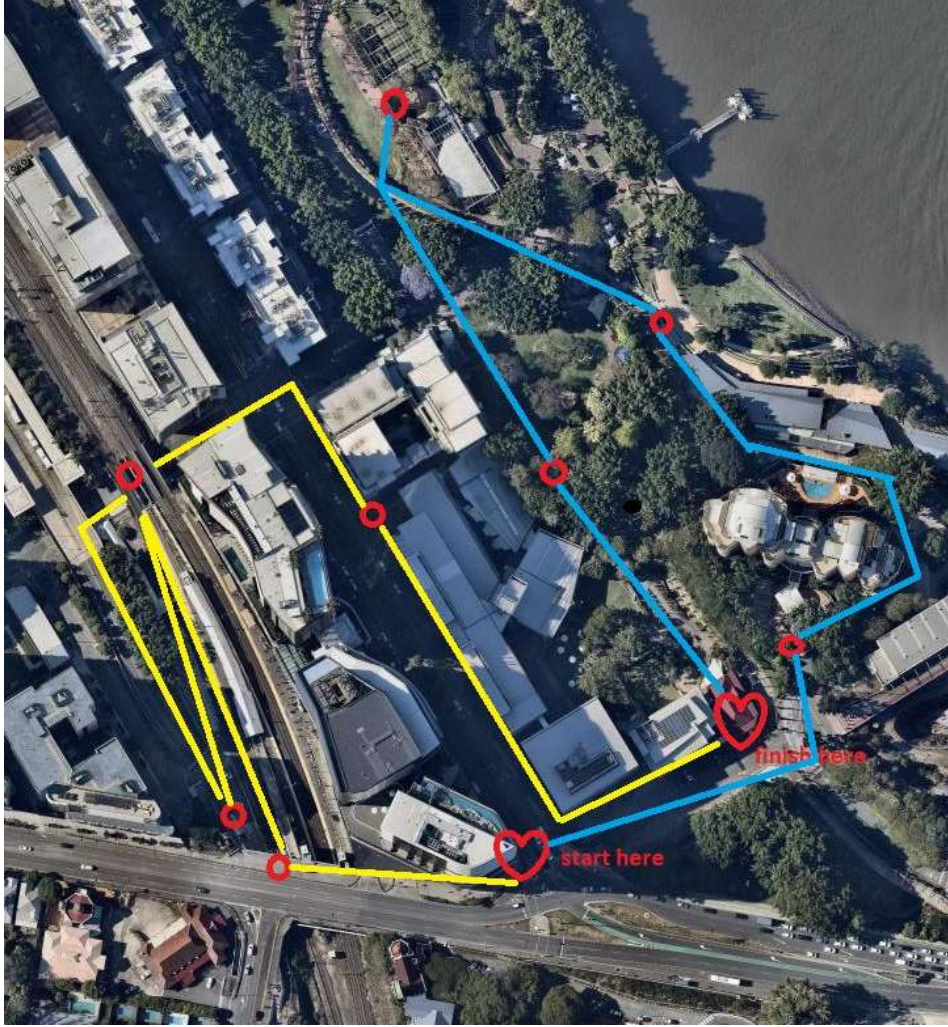
**4 QCA Loading Dock**

A driveway on Grey Street that is also a pedestrian link to Southbank.

20% felt unsafe + 0% very unsafe

Lighting and more people would make it feel safer





Thank  
you !